



**DIPLOMATIC  
HYDRAULICS**

21 410/104 ED



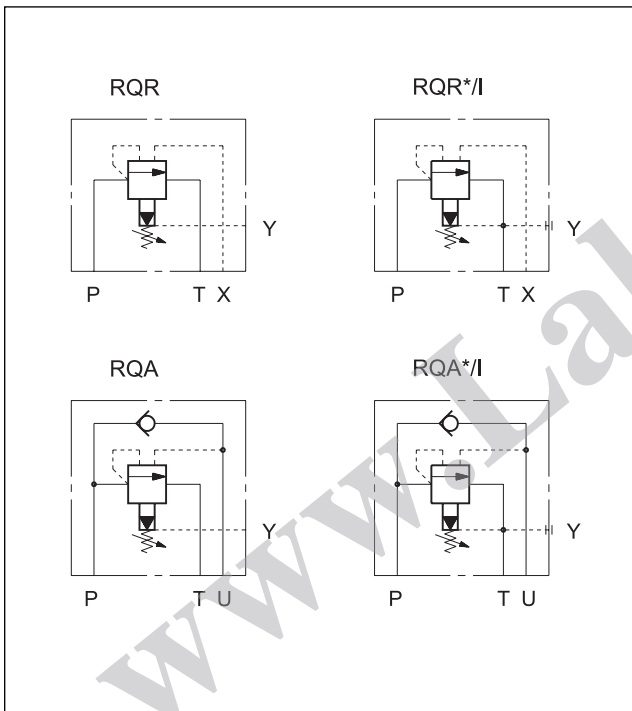
**RQ\*\* - P**  
**UNLOADING VALVE**  
(FOR CIRCUITS WITH ACCUMULATOR)  
**SERIES 41**

**RQR\* - P**  
FOR REMOTE PILOTING

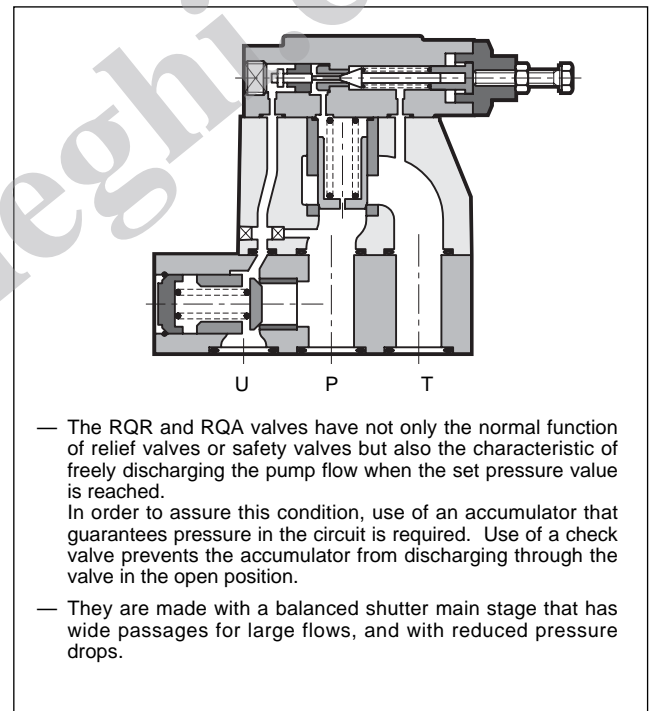
**RQA\* - P**  
WITH INCORPORATED CHECK VALVE

**SUBPLATE MOUNTING**

**HYDRAULIC SYMBOLS**



**OPERATING PRINCIPLE**



| <b>PERFORMANCE RATINGS</b> (measured with mineral oil of viscosity 36 cSt at 50°C) |       | <b>RQR3-P</b>                  | <b>RQR5-P</b> | <b>RQR7-P</b> | <b>RQA5-P</b> | <b>RQA7-P</b> |
|--|-------|--------------------------------|---------------|---------------|---------------|---------------|
| Maximum operating pressure   | bar   | 350                            |               |               | 320           |               |
| Maximum flow rate  | l/min | 200                            | 400           | 500           | 400           | 500           |
| Ambient temperature range  | °C    | -20 ÷ +50                      |               |               |               |               |
| Fluid temperature range  | °C    | -20 ÷ +80                      |               |               |               |               |
| Fluid viscosity range  | cSt   | 10 ÷ 400                       |               |               |               |               |
| Recommended viscosity  | cSt   | 25                             |               |               |               |               |
| Degree of fluid contamination  |       | According to NAS 1638 class 10 |               |               |               |               |
| Mass   | kg    | 3,5                            | 4,3           | 6,5           | 10,4          | 19            |

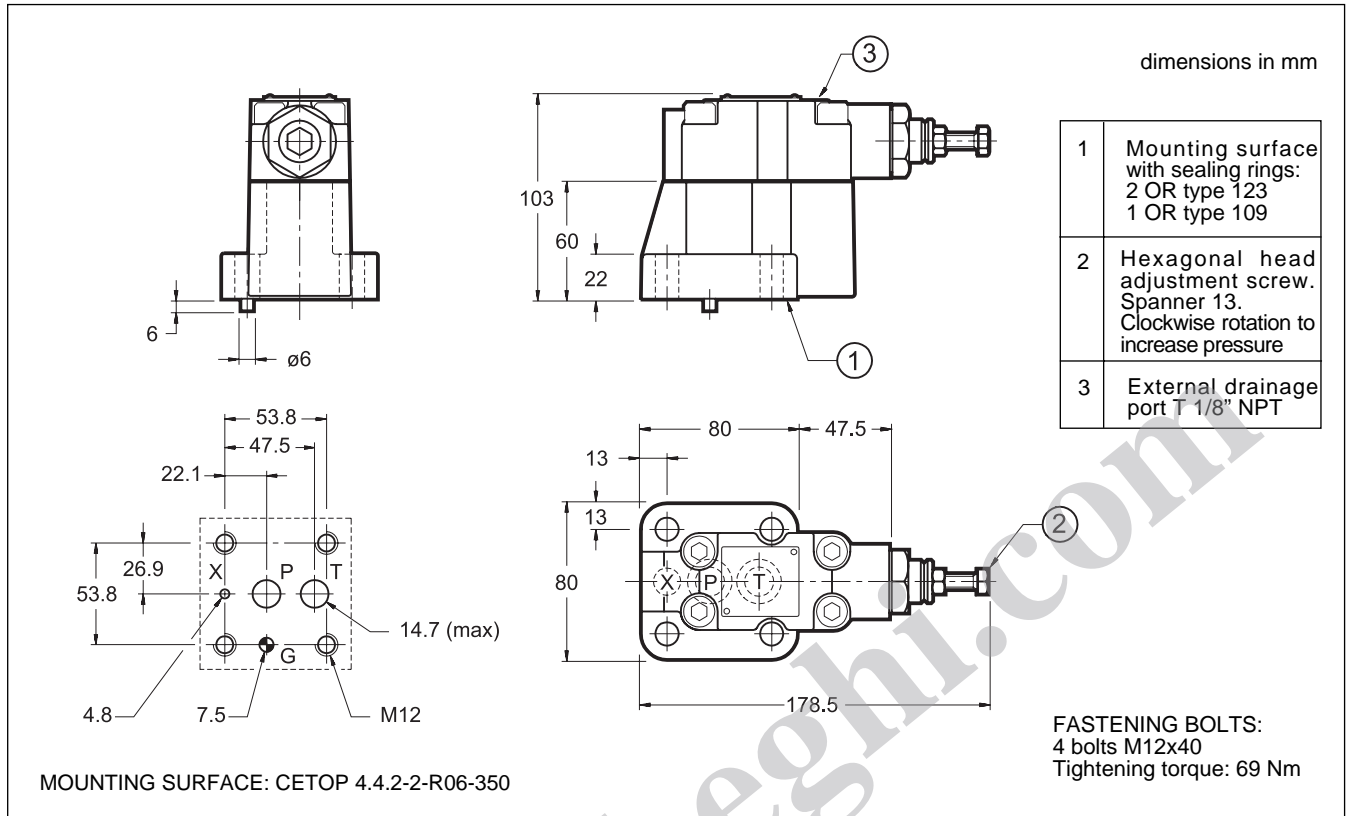




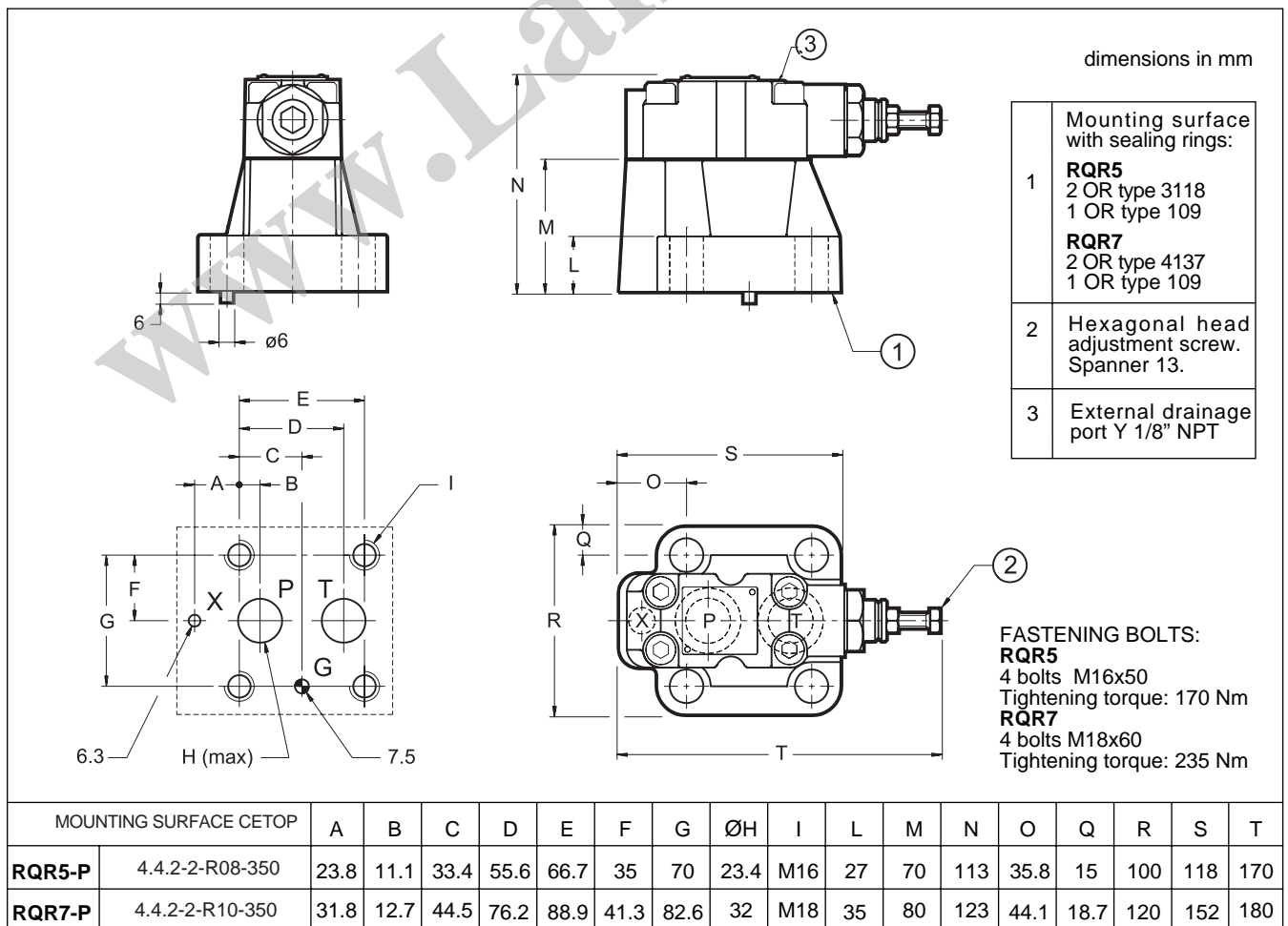
# RQ\*\*-P

## SERIES 41

### 4 - RQR3-P OVERALL AND MOUNTING DIMENSIONS

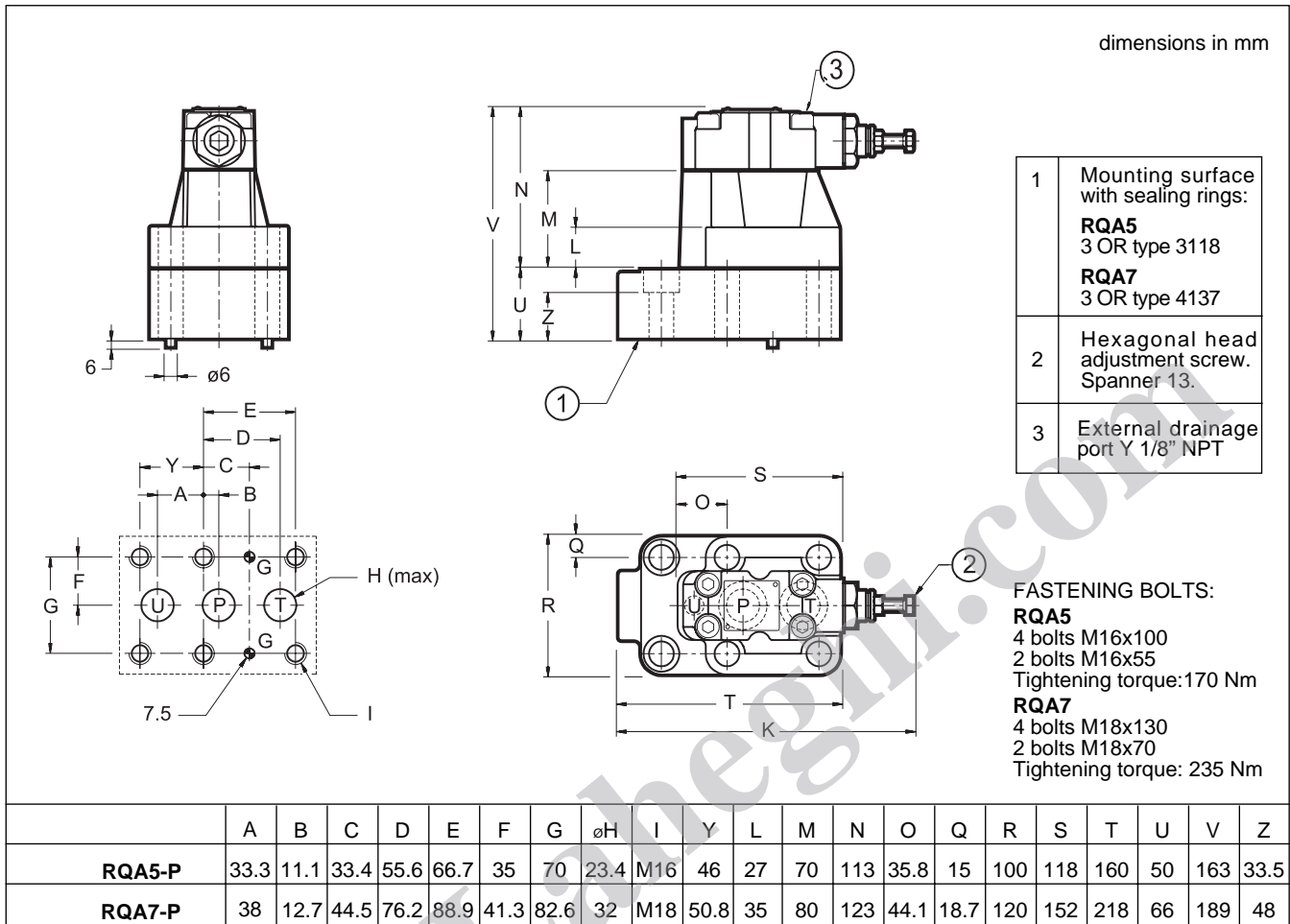


### 5 - RQR5-P and RQR7-P OVERALL AND MOUNTING DIMENSIONS



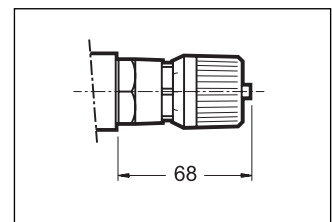


## 6 - RQA5-P and RQA7P OVERALL AND MOUNTING DIMENSIONS



## 7 - ADJUSTMENT KNOB

The RQ valves can be equipped with a SICBLOC adjustment knob.  
 To operate it, push and rotate at the same time.  
 To request this option, add: /M (see par.1).



## 8 - SUBPLATES (see catalogue 51 000)

|                      | <b>RQR3-P</b>         | <b>RQR5-P</b>         | <b>RQR7-P</b>         | <b>RQA5-P</b>          | <b>RQA7-P</b>          |
|----------------------|-----------------------|-----------------------|-----------------------|------------------------|------------------------|
| Type                 | PMRQ3-AI4G rear ports | PMRQ5-AI5G rear ports | PMRQ7-AI7G rear ports | PMRQA5-AI5G rear ports | PMRQA7-AI7G rear ports |
| Port dimension P T U | 1/2" BSP              | 3/4" BSP              | 1" 1/4 BSP            | 3/4" BSP               | 1" 1/4 BSP             |
| Port dimension X     | 1/4" BSP              | 1/4" BSP              | 1/4" BSP              | -                      | -                      |

|  |  |
|--|--|
|  | <p><b>DIPLOMATIC OLEODINAMICA SpA</b><br/>                 20025 LEGNANO (MI) - P.le Bozzi, 1 / Via Edison<br/>                 Tel. 0331/472111 - Fax 0331/548328</p> |
|--|--|